

**NATIONAL COUNCIL OF SCIENCE MUSEUMS
SECTOR-V, BLOCK-GN, BIDHANNAGAR,
KOLKATA – 700 091.**

TENDER NO. I-18012/3/21(254)

Specification and Drawing

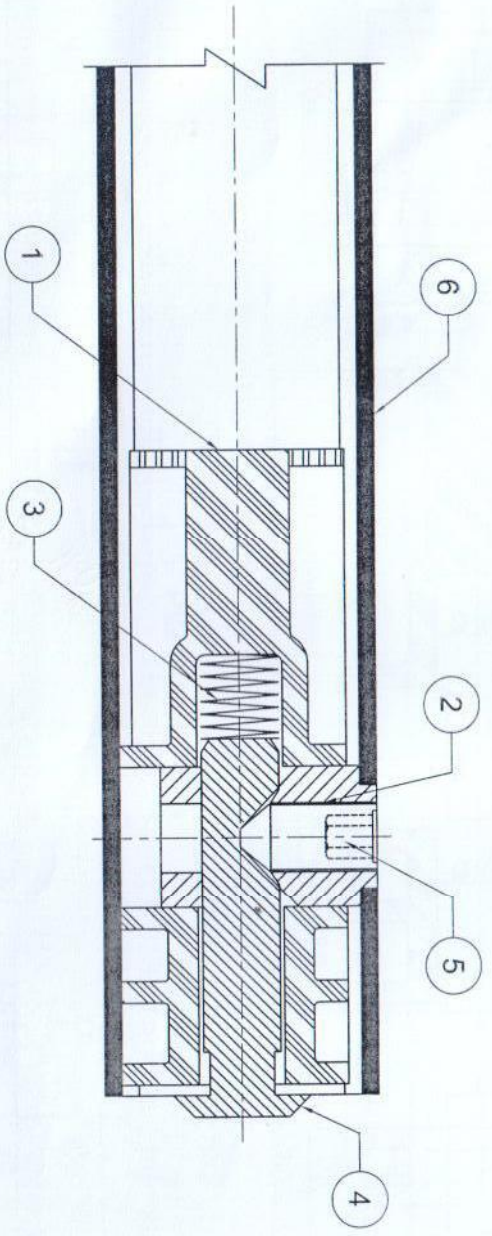
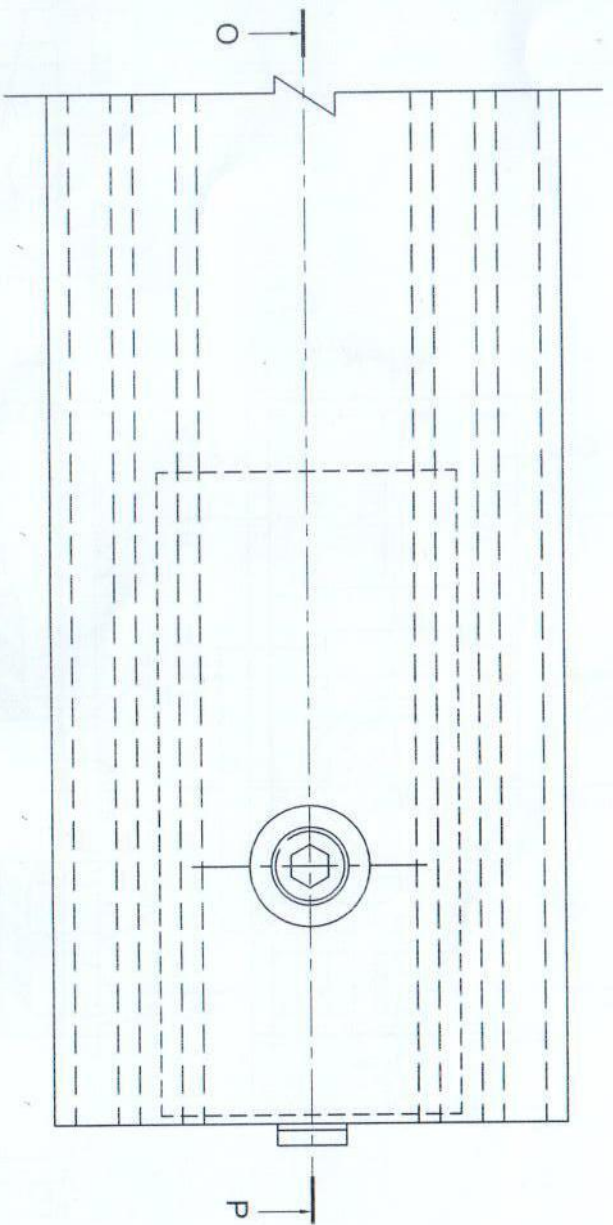
Fabrication and Supply of Aluminium extruded Section (SIMA) Black powder coated (RAL-9005) and Nylock Lock Assembly

Sl. No.	Particulars	Quantity (Nos.)	Specification
1.	Square Vertical SV 8	300	<ul style="list-style-type: none"> • Dimension : Strictly as per drawing • Finish: Power coated (70 to 100 micron) • Colour: Black (RAL 9005) • Surface should be free from any embossed/ etched/ watermark/ stickers of manufacturer's logo or name. • All sections should be supplied with individual transparent reusable protective wrapper.
2.	Octagonal Vertical OV 8	150	
3.	Horizontal plain H 2	300	
4.	Horizontal plain H 4	400	
5.	Horizontal single web HSW 2	200	
6.	Horizontal single web HSW 4	300	
7.	Horizontal double web HDW 2	100	
8.	Horizontal double web HDW 4	100	
9.	Nylon Lock Assembly for SIMA bar	3080	

Dated

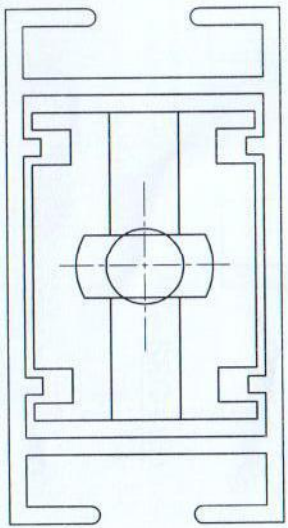
Official Seal


Signature of the Tenderer/Constituted Attorney

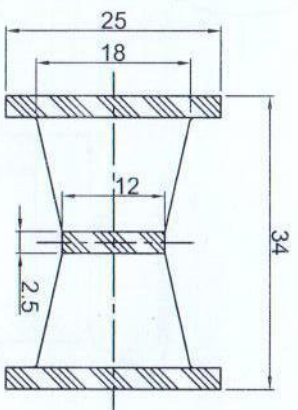
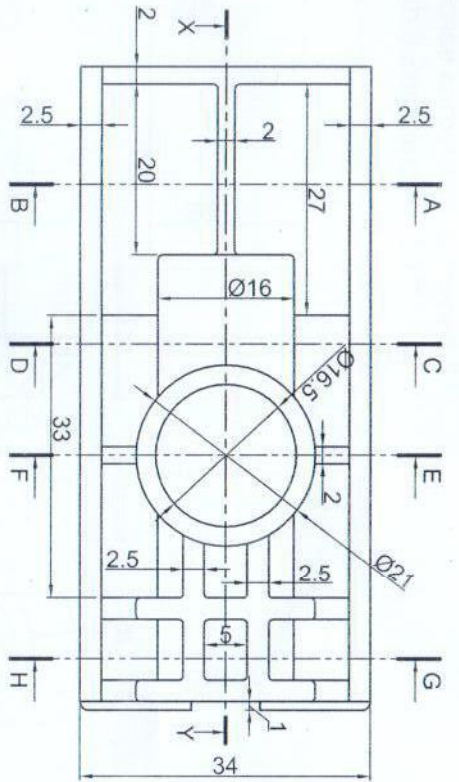


SECTION - OP

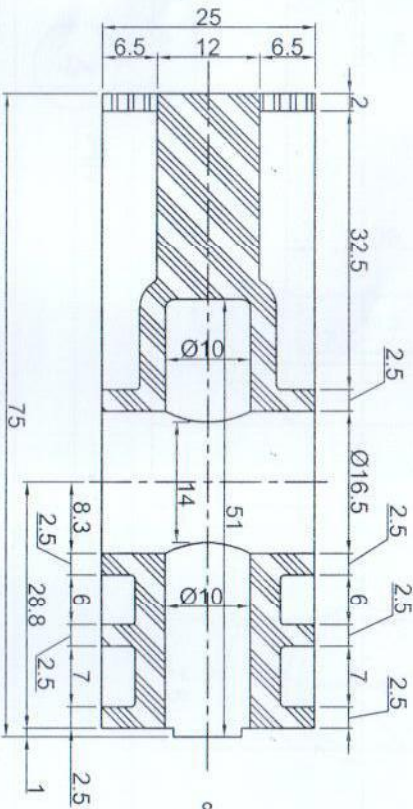
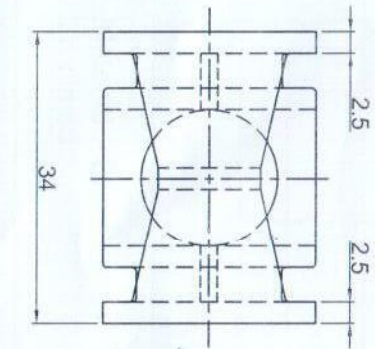
- 1 PIN GUIDE
- 2 PIN CARRIER
- 3 COMPRESSION SPRING
- 4 PIN
- 5 ALLEN HEAD GRUB SCREW
- 6 HORIZONTAL BAR



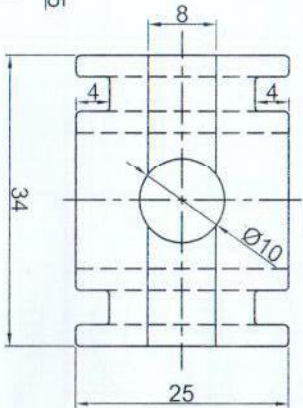
NATIONAL COUNCIL OF SCIENCE MUSEUMS				
UNIT: C.R.T.L.	PROJ.- CRTL			
DRG. NO. MECH-05/48/5/C	DATE 16/10/15	SCALE 1 : 1	TOLERANCE ± 0.25mm	
TITLE:- LOCK ASSEMBLY			NO OFF.	
DRN. BY MINAKSHI SUR	OKD. BY <i>(Signature)</i>	APPRD. BY		



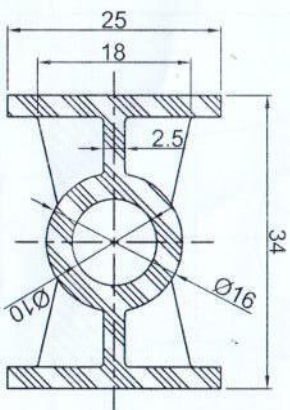
SEC - AB



SEC - XY



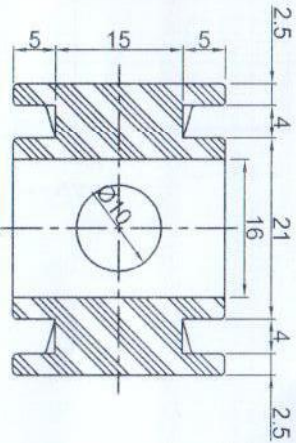
SEC - CD



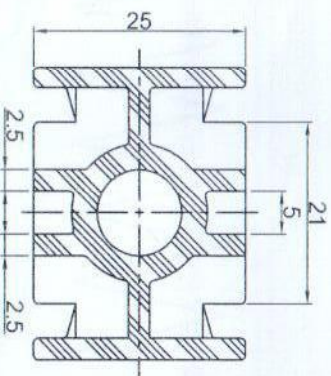
1

PIN GUIDE


MATERIAL:- DERLIN (WHITE)



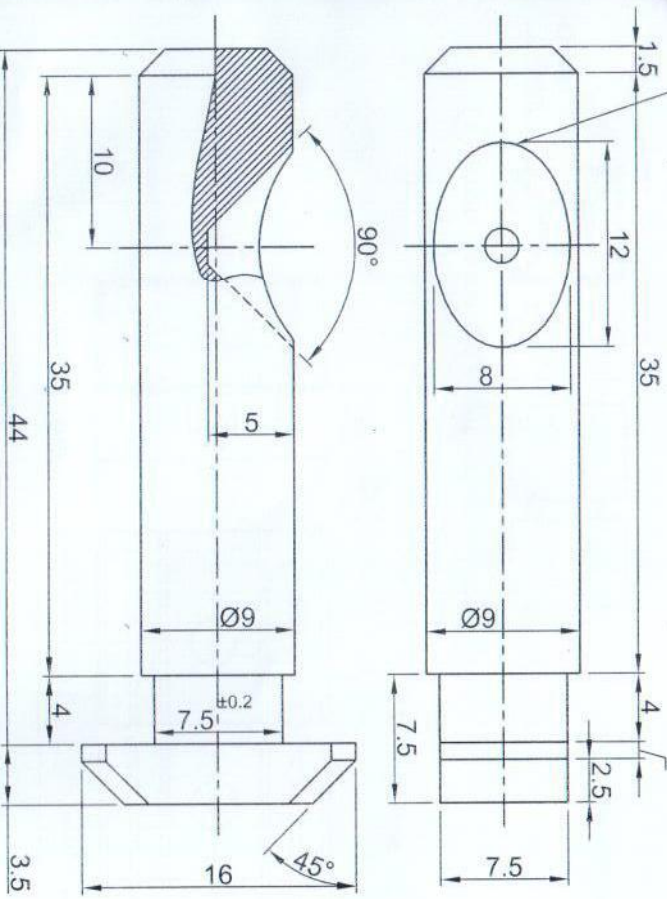
SEC - EF



SEC - GH

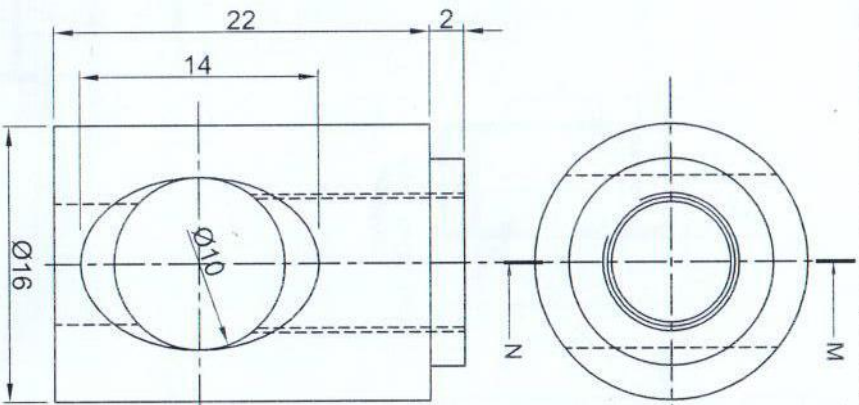
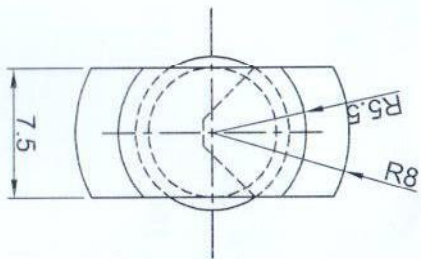
NATIONAL COUNCIL OF SCIENCE MUSEUMS					
UNIT: C.R.T.L.	PROJ.- CRTL				
DRG. NO. MECH-05/48/15/A	DATE 16/10/15	SCALE 1 : 1	TOLERANCE ± 0.25mm		
TITLE:- LOCK PIN GUIDE			NO OFF.		
Details					
DRN. BY MINAKSHI SUR	CKD. BY	APPRD. BY			

Only grooved surface case carburised, hardened & tempered to case depth 0.2mm and RC 50 ± 2



Material :- EN1A
Zn plated

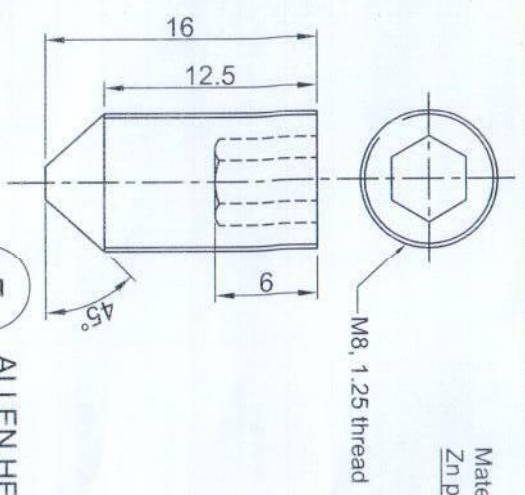
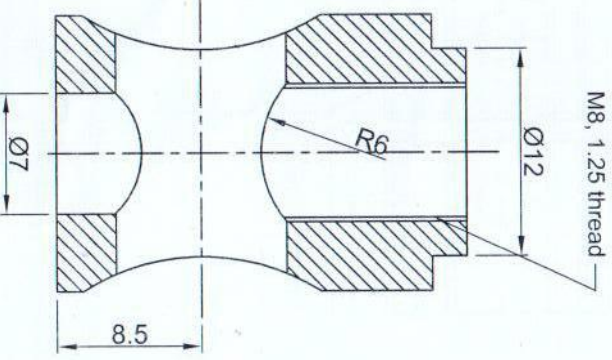
4 PIN



Material :- C.R.M.S.
Zn plated

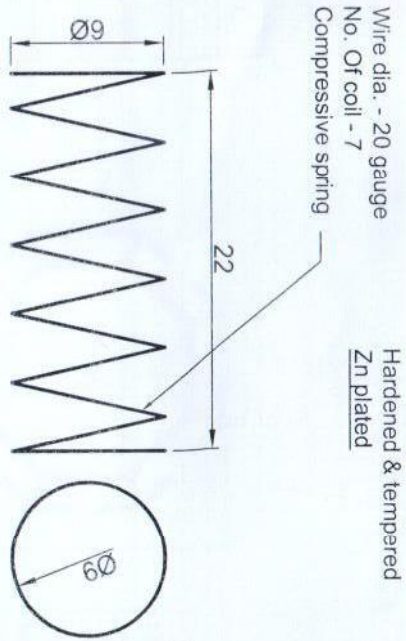
SEC - MN

2 PIN CARRIER



Material :- High tensile steel
Zn plated

5 ALLEN HEAD GRUB SCREW



Wire dia. - 20 gauge
No. Of coil - 7
Compressive spring

Material :- Spring steel wire.
Hardened & tempered
Zn plated

3 COMPRESSION SPRING

NATIONAL COUNCIL OF SCIENCE MUSEUMS

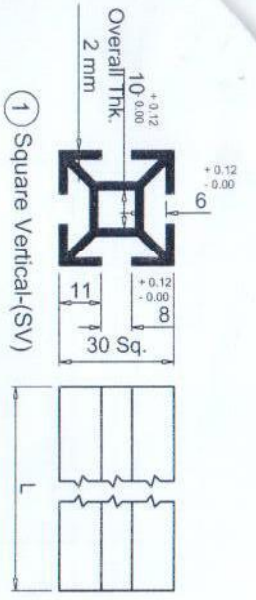


UNIT: C.R.T.L. PROJ.- CRTL

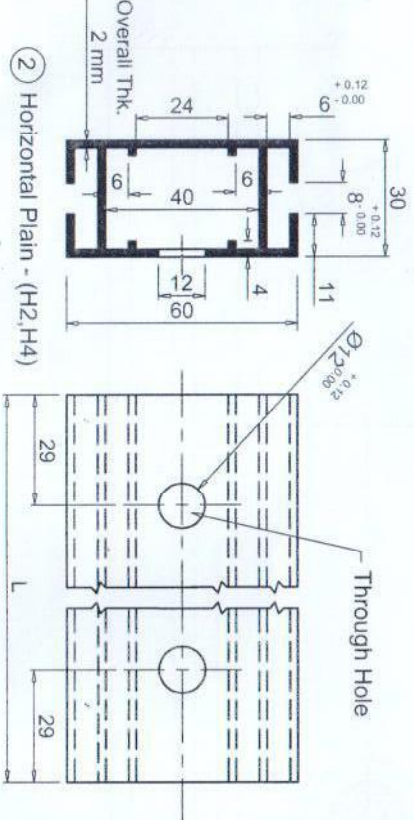
DRG. NO.	DATE	SCALE	TOLERANCE
MECH-05/48/15/B	16/10/15	1 : 1	± 0.25mm

TITLE:- LOCK PIN Details NO OFF.

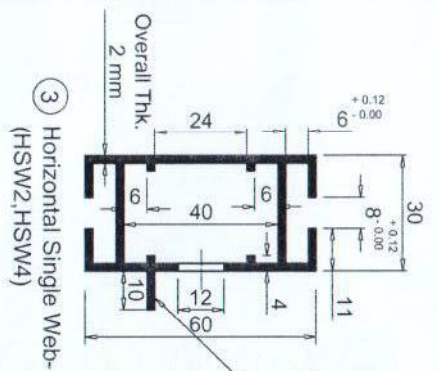
DRN. BY MINAKSHI SUR CKD. BY [Signature] APPRD. BY



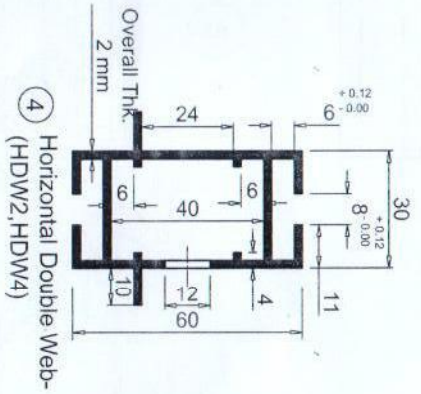
① Square Vertical-(SV)



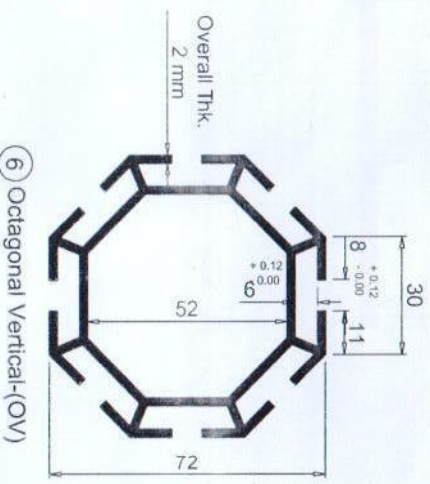
② Horizontal Plain - (H2,H4)



③ Horizontal Single Web- (HSW2,HSW4)



④ Horizontal Double Web- (HDW2,HDW4)



⑥ Octagonal Vertical-(OV)

SL.NO.	ITEM.NO.	CODE	SECTION	LENGTH (L)
1	①	SV 8	Square Vertical	2440 mm
2	②	H2	Horizontal Plain	588 mm
3	②	H4	Horizontal Plain	1206mm
4	③	HSW2	Horizontal Single Web	588 mm
5	③	HSW4	Horizontal Single Web	1206mm
6	④	HDW2	Horizontal Double Web	588 mm
7	④	HDW4	Horizontal Double Web	1206mm
8	⑥	OV 8	Octagonal Vertical	2440 mm

- Note :**
1. All Dimensions are in mm
 2. Finish : Aluminium self coloured Anodized. (out side of the section) thickness of Anodized 15 Micron
 3. Both end of the section should be free from bars.

NATIONAL COUNCIL OF SCIENCE MUSEUMS

UNIT: C.R.T.L. PROJ.- CRTL

DRG. NO. MISC-05/181/10 DATE 01/07/10 SCALE N.T.S. TOLERANCE As per IS-647-1983

TITLE:- **Al. Extruded Section**

DRN. BY: [Signature] CKD. BY: [Signature] APPRD. BY:

